



# MONTHLY MEMBERSHIP PROGRESS REPORT

District 46

Results as of: 03/31/2018

GMT: HOWARD HUDSON

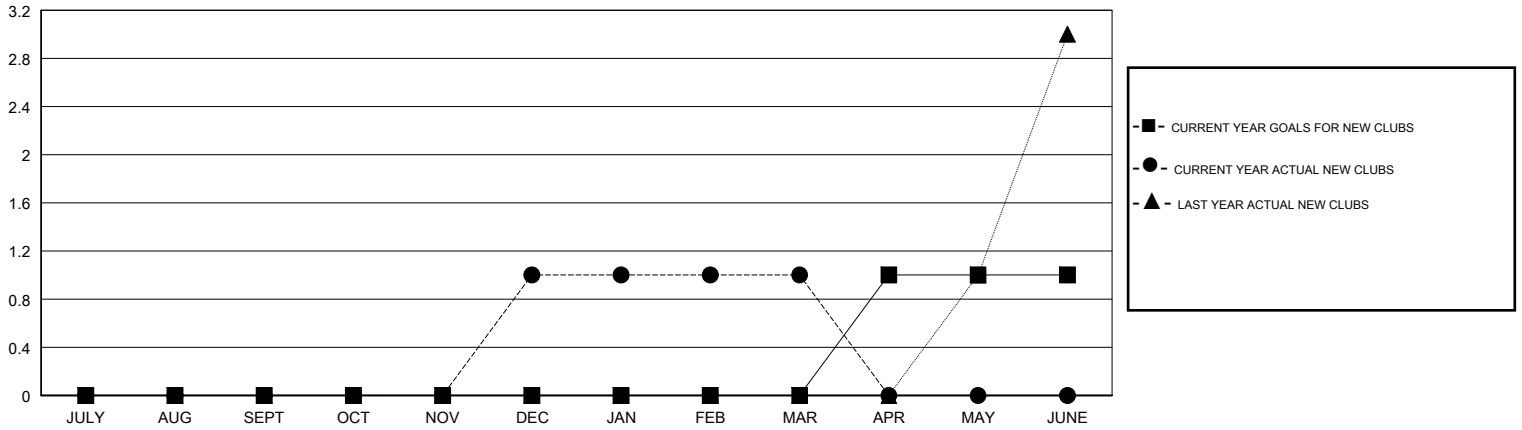
LOCATION NEVADA

GMT CA

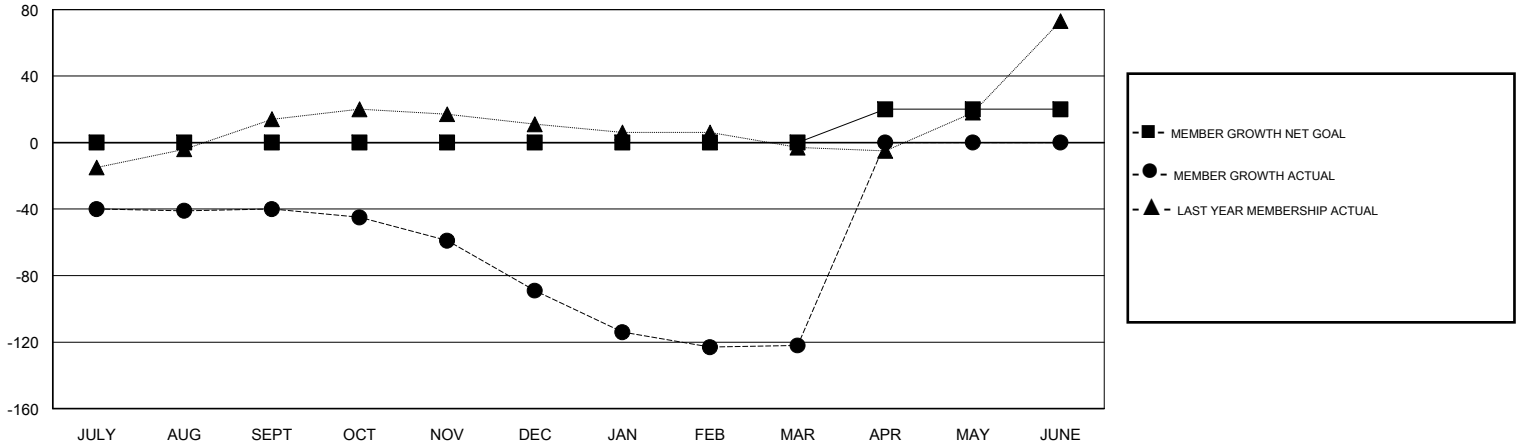
Clubs			
RESULTS FOR 2017-2018			
QUARTER	NEW CLUB GOAL	NEW CLUBS	DROPPED CLUBS
JULY/AUG/SEPT	0	0	1
OCT/NOV/DEC	0	1	3
JAN/FEB/MAR	0	0	2
APR/MAY/JUNE	1	0	0

Members			
RESULTS FOR 2017-2018			
QUARTER	MEMBER GROWTH NET GOAL	MEMBER GROWTH ACTUAL	DROPPED MEMBERS ACTUAL (including transfers)
JULY/AUG/SEPT	0	50	83
OCT/NOV/DEC	0	43	87
JAN/FEB/MAR	0	61	91
APR/MAY/JUNE	20	0	0

GOALS AND ACTUAL NEW CLUBS CUMULATIVE



GOALS AND ACTUAL MEMBERS CUMULATIVE



DROPPED CLUBS: 6	
DROPPED MEMBERS	
DECEASED	12
CLUB CANCELLED	54
OTHER	195
<b>TOTAL</b>	<b>261</b>

39 CLUBS OF 51 ADDED 1 OR MORE NEW MEMBERS
<a href="#">CLICK HERE FOR CUMULATIVE MEMBERSHIP DATA</a>

<u>GENDER DISTRIBUTION</u>	
MALE	673 (60.47%)
FEMALE	440 (39.53%)
Women Percentage Fiscal Year Goal: 38%	
TOTAL FAMILY UNIT MEMBERS	221
FAMILY MEMBERS PAYING HALF DUES	114